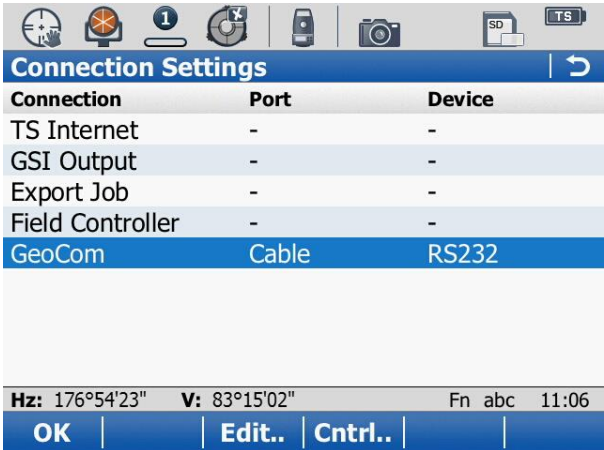
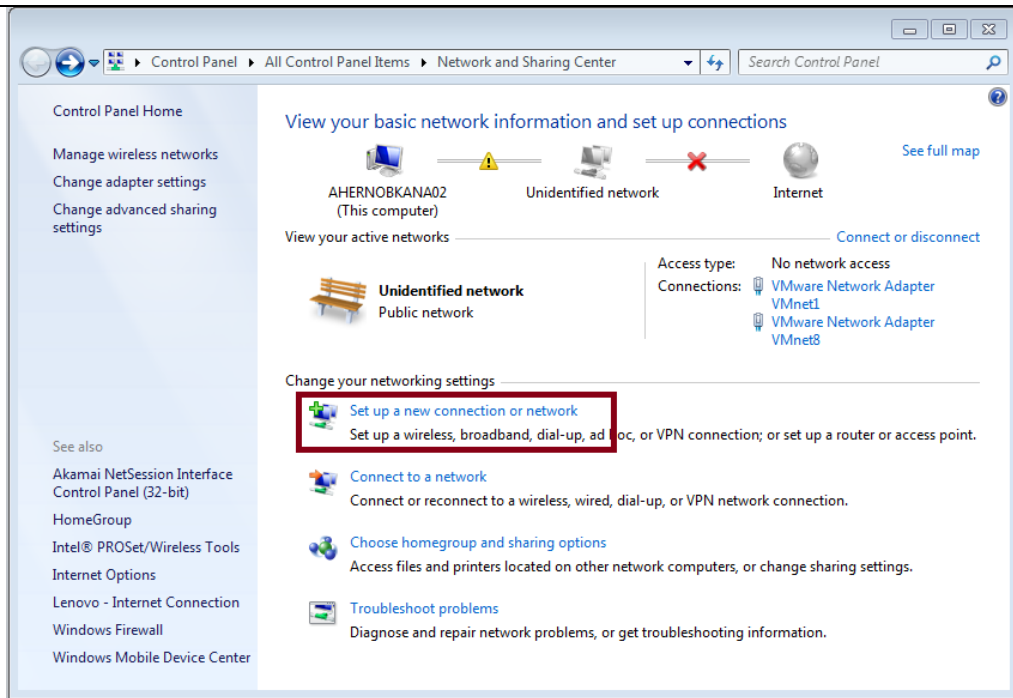


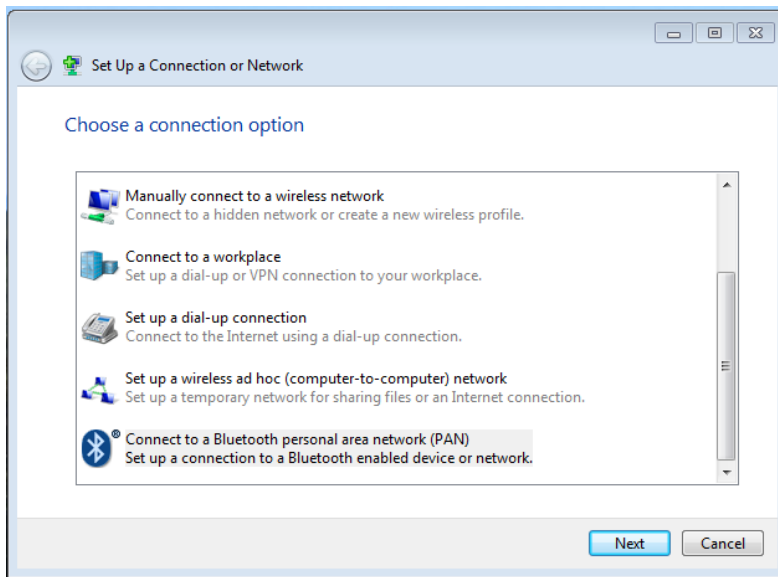
### How to connect MS50/TM50/TS50 with a Win7 PC using Bluetooth

This tutorial describes how to connect the Nova TPS sensors to PC with Windows 7 installation using the Bluetooth connection. The description may vary slightly due to different PC configuration.

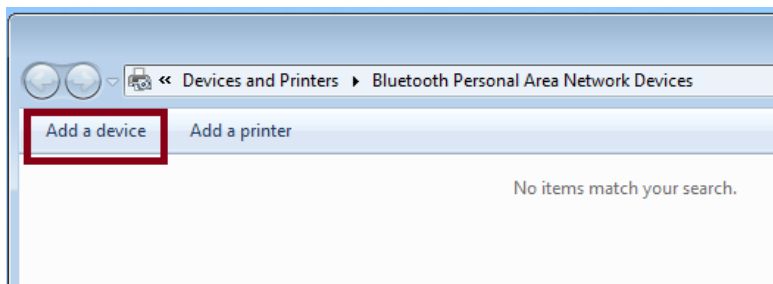
<p><b>Step 1</b></p>	<p>Before you start, have your TPS at the required distance from a PC.</p> <p>On the TPS, in Viva SmartWorX open Instrument &gt; Connections.. &gt; All other connections.</p>  <p>Press F3(Edit) and select Connect using: TS Bluetooth 1 for Port and Device, and Confirm.</p>
<p><b>Step 2</b></p>	<p>Go to Network and Sharing Center and click on "Set up a new connection or network".</p>



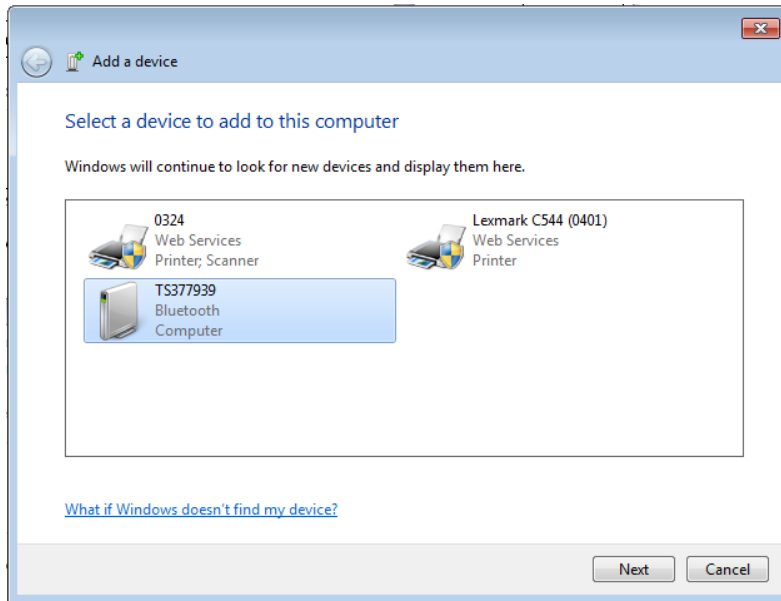
Select the option “Connect to a Bluetooth personal area network (PAN)” and click Next.



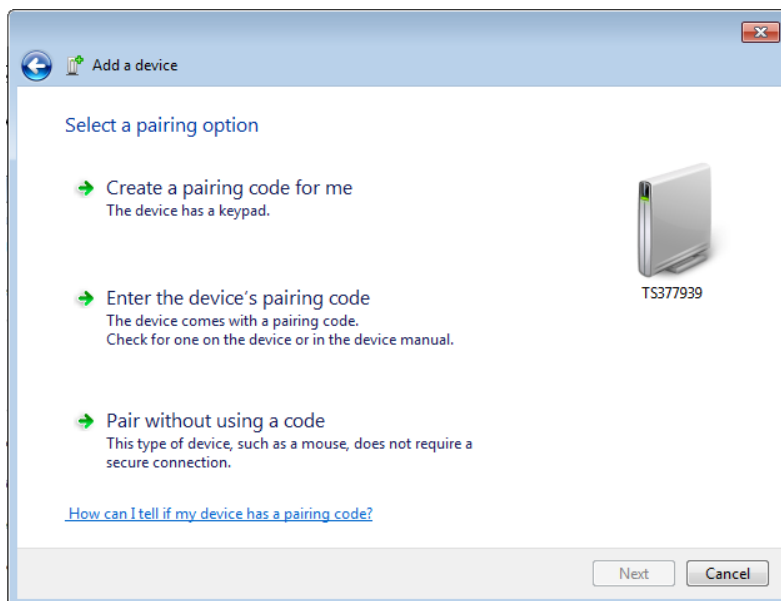
Confirm the next window with Next. Now, click on “Add a device” to add the TPS.



The separate window opens with all Bluetooth devices available in the proximity to the PC.



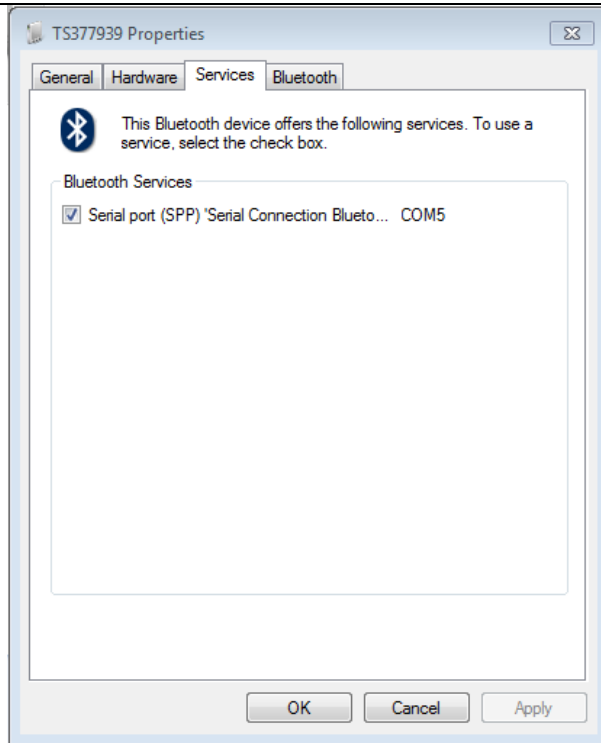
Select the TPS device and click Next. Select the option "Select the device's pairing code".



In the next step, enter 0000 for a pairing code and click Next. Device is now added to the list of Bluetooth devices.

**Step 3**

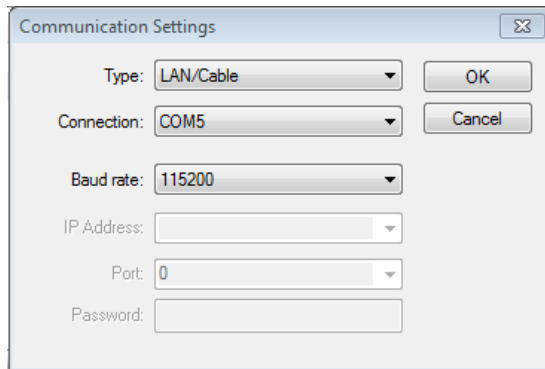
Right-click on device and select Properties. Under tab Services, the serial port number is shown.



**Step 4**

Connect to TPS with GeoMoS Monitor.

Open GeoMoS Monitor, and select Configuration > Sensor Manager. Add the sensor, and select the communication. Confirm with OK.



Your GeoMoS is now connected to TPS via Bluetooth.